

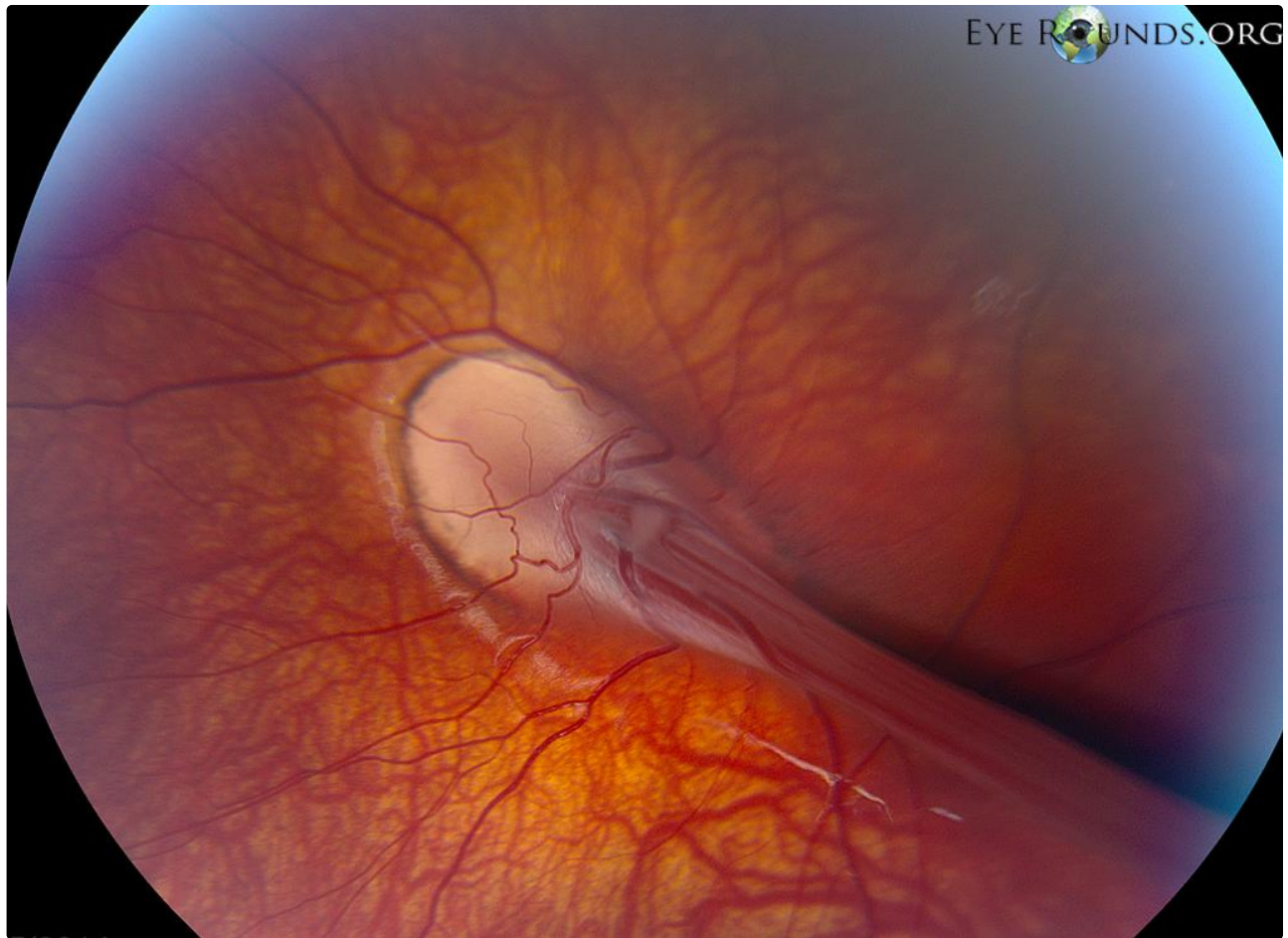
## Familial Exudative Vitreoretinopathy (FEVR)(3)

**Category(ies):** Genetics, Inherited Eye Disease, Pediatrics, Retina, Vitreous

**Contributor:** [Jesse Vislisel, MD](#)

**Photographer:** Cindy Montague, CRA

Familial exudative vitreoretinopathy (FEVR) is an inherited condition that most commonly has autosomal dominant inheritance. It is characterized by failure of the temporal retina to vascularize, similar to retinopathy of prematurity. FEVR results in fibrovascular proliferation causing retinal folds, temporal dragging of the macula, and tractional retinal detachments.



This photograph shows a fibrovascular stalk, wrapped in a fold of retina, that originates from the optic disc and stretches across the macula in a patient with FEVR

[Enlarge](#)

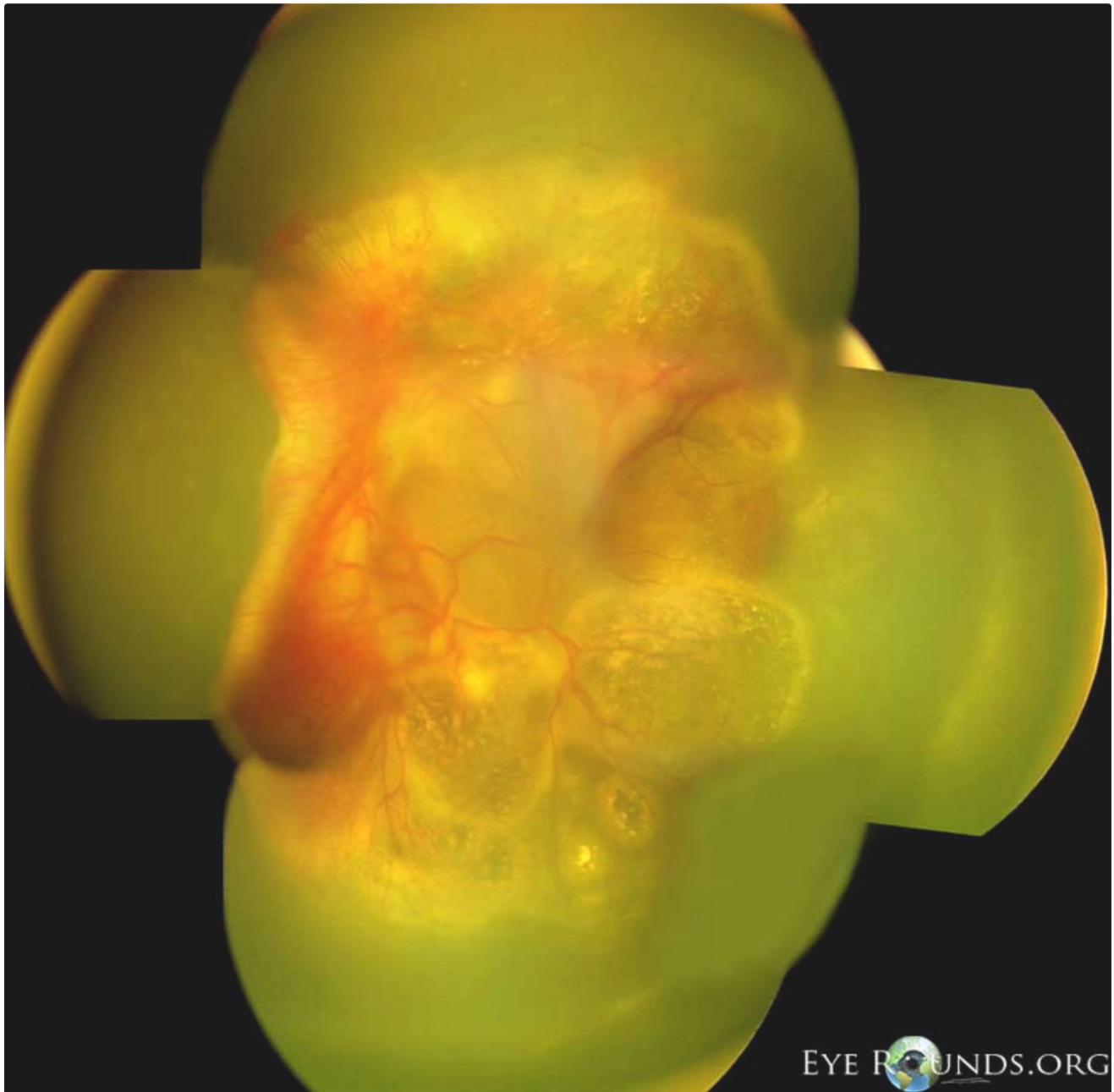
[Download](#)

[OMIM: 133780](#)

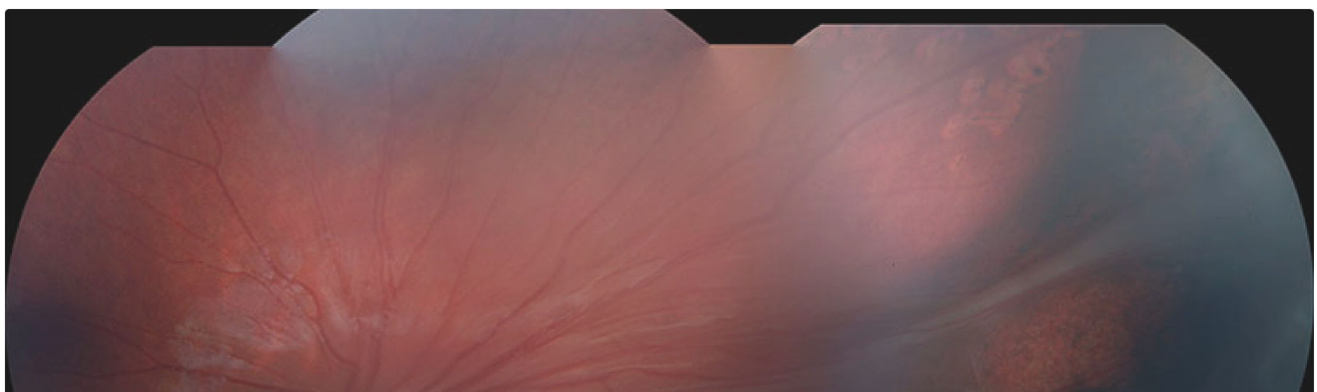
Image Permissions:

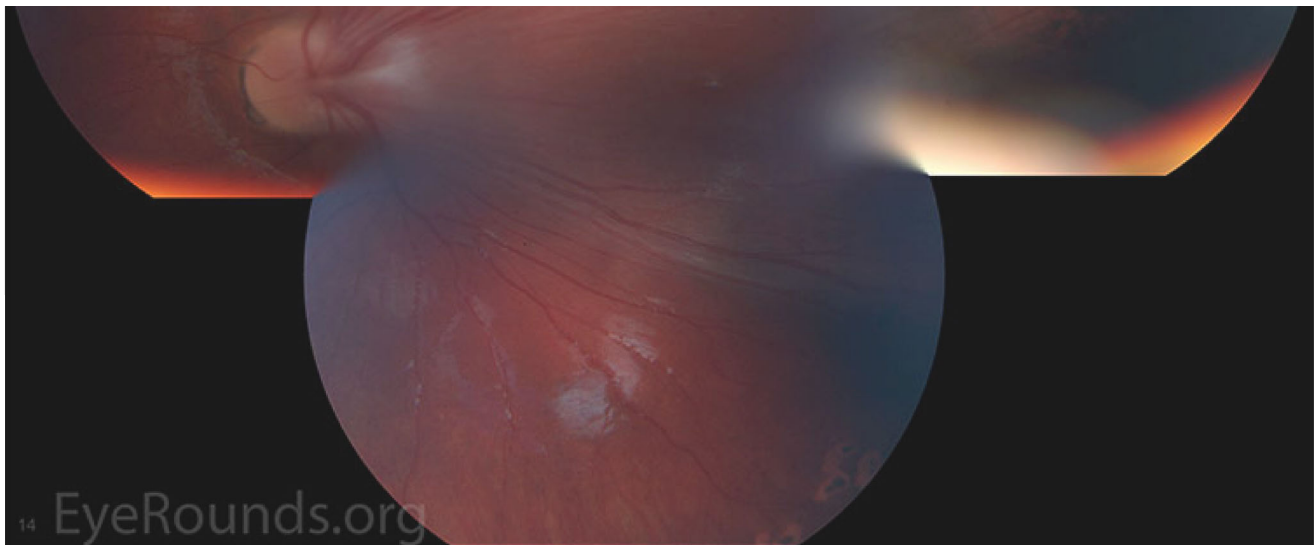


Related Articles

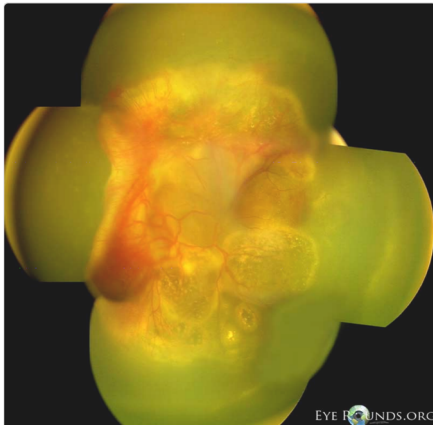


[Related Atlas Entry: Familial exudative vitreoretinopathy\\_\(FEVR\)](#)

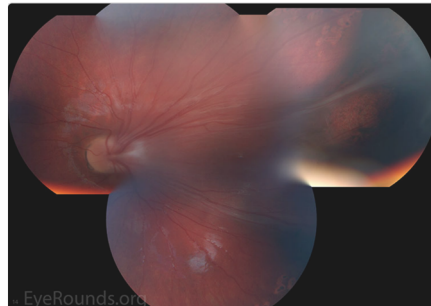




[Related Atlas Entry: Familial exudative vitreoretinopathy \(FEVR\) \(2\).](#)



[Related Atlas Entry: Familial exudative vitreoretinopathy \(FEVR\)](#)



[Related Atlas Entry: Familial exudative vitreoretinopathy \(FEVR\) \(2\)](#)

## Address

University of Iowa  
Roy J. and Lucille A. Carver College  
of Medicine  
Department of Ophthalmology and  
Visual Sciences  
200 Hawkins Drive  
Iowa City, IA 52242

[Support Us](#)

## Legal

Copyright © 2019 The University of  
Iowa. All Rights Reserved  
[Report an issue with this page](#)  
[Web Privacy Policy](#) |  
[Nondiscrimination Statement](#)

## Related Links

[Cataract Surgery for Greenhorns](#)  
[EyeTransillumination](#)  
[Gonioscopy.org](#)  
[Iowa Glaucoma Curriculum](#)  
[Iowa Wet Lab](#)  
[Patient Information](#)  
[Stone Rounds](#)  
[The Best Hits Bookshelf](#)

## EyeRounds Social Media

Follow



Receive notification of new cases,  
sign up here  
[Contact Us](#)  
[Submit a Suggestion](#)

